



# **Nebula Red Light**

## **NB300 & NB600**



## **USER MANUAL**

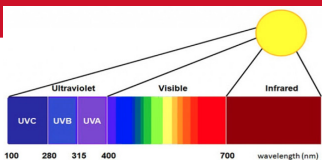
### **ENG Instructions**

For FR, DE, IT & ES user manual  
please visit our website:

[www.nebula-appliances.com/manuals](http://www.nebula-appliances.com/manuals)

# ABOUT YOUR RED LED LIGHT THERAPY PANEL

Photo bio-modulation, also known as low-level light therapy (LLLT), is a medical technique in which exposures to low-level laser light or light-emitting diodes (LEDs) stimulate cellular function leading to beneficial effects. LED is a semiconductor device available at wavelengths ranging from ultraviolet (UV) to visible to near-infrared (NIR) bandwidth that converts electrical current into a non-coherent narrow bandwidth of the electromagnetic spectrum.



It isn't just light that we can see that comes from the sun. White light can be split up into a spectrum of many different wavelength and colors.

We have focused our product on the visible red light and invisible near infrared light, which have been identified to give benefits to human body.

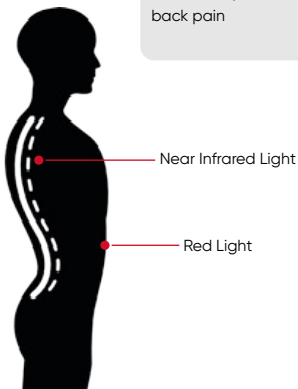
Studies show that Red Light 620nm-670nm can penetrate deep into the skin of 4-5mm. Whilst Near Infrared Light 740-880nm can go much deeper to reach the subcutaneous layer and increase blood flow.

# INTRODUCTION

The 300w and 600w red light therapy panels emit both visible red light (660nm) and non-visible near infrared light (850nm) which provides various therapeutic health benefits which may include:

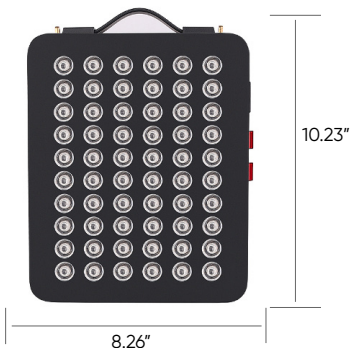
- Improved skin
- Anti-aging
- Anti-wrinkle
- Mental clarity
- Relaxation
- Increased sleep

- Increased collagen production
- Stimulated hair growth
- Increased blood flow
- Reduced inflammation
- Enhanced muscle recovery
- Reduced joint and back pain



## PARAMETER - NB300

Power:	300w
Size:	260x210x70mm
Spectrum:	660nm & 850nm
Led:	60pcs double chip led
New Weight:	2.65kg
Beam Angle :	30 degrees
Dual Switch :	RED & Infrared control
Voltage:	AC85-265V
Irradiance:	>100mw/cm <sup>2</sup> @ 3inches >93mw/cm <sup>2</sup> @ 6inches >50mw/cm <sup>2</sup> @ 12inches





## FUNCTION - NB 300W

The 300w red light therapy panel consists of 60pcs dual chip LEDs, each single led diode includes: 1x660nm red and 1x850nm infrared.

The way that we have designed this panel is to mix the red and infrared more evenly then to achieve a more better therapy result.

### MIX 660NM & 850NM



## DUAL-SWITCHES

Dual switches control red and near infrared separately

**RED:** control 60pcs red 660nm

**NIR:** control 60pcs near infrared 850nm

**Note:** Near infrared 850nm is not visible to human eyes, but you can see it clear under camera.

# PACKING - NB 300W

## NB300

60x5W

Dual Chip

660nm&850nm



MAKES YOU HEALTHY!



Adjustable Pulley System



Goggles



Buckle



Power Cord



Door Hook

A: 1x 300w red light therapy panel

B: 1x standard Power Cable

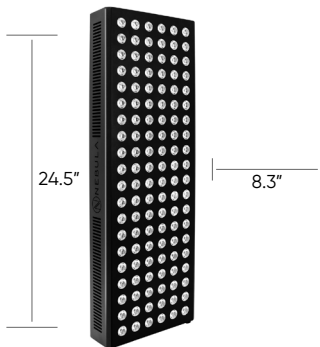
C: 1x Goggles

D: Other Accessories Available



## PARAMETER - NB600

Power:	600w
Size:	621x211x65mm
Spectrum:	660nm & 850nm
Led:	120pcs double chip 5W
New Weight:	4.00kg
Beam Angle :	30 degrees
Dual Switch :	RED & Infrared control
Voltage:	AC100-240V
Irradiance:	>112mw/cm <sup>2</sup> @ 3inch >101mw/cm <sup>2</sup> @ 6inch >81.2mw/cm <sup>2</sup> @ 9inch >67.1mw/cm <sup>2</sup> @ 12inch



## FUNCTION - NB 600W

The 600w red light therapy panel consists of 120pcs dual chip LEDs, each single led diode includes: 1x660nm red and 1x850nm infrared.

The way that we have designed this panel is to mix the red and infrared more evenly then to achieve a more better therapy result.

### MIX 660NM & 850NM



## DUAL-SWITCHES

Dual switches control red and near infrared separately

**RED:** control 120pcs red 660nm

**NIR:** control 120pcs near infrared 850nm

**Note:** Near infrared 850nm is not visible to human eyes, but you can see it clear under camera.

# PACKING - 600W

## NB600

120x5W

Dual Chip  
660nm&850nm

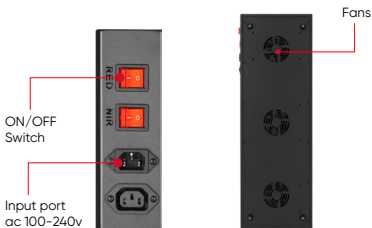


A: 1x 600w red light therapy panel

B: 1x standard Power Cable

C: 1x Goggles

D: Other Accessories Available



## OPERATION INSTRUCTION

PLEASE NOTE RESULTS ARE NOT INSTANT  
YOU WILL NEED TO USE CONSISTANTLY TO  
SEE BENEFITS.

- Clear the area being treated by removing all traces of make-up or sweat. For best results wash the area being treated to ensure a clean surface.
  - For safety, please make sure the switch is in the OFF position before you plug in the power cable to the wall outlet.
  - Place the front of the device next to the bare skin you want to treat, no more than 6-10 inches away from the area being treated.
- 
- Use button Red (660nm) for skin conditions. This light can be absorbed more effectively by the top layers of the skin. Use button NIR (850nm) for penetrating deeper into skin. You can use both at the same time for all benefits.

- When using the device on your face, do not look directly at the LEDs. There are goggles included in the packing. We recommend wearing them if the light is too bright.
- Do not operate device anywhere that it could come into contact with water. Stop using device immediately if you think it is defective. Please contact us and get more instruction: - **[sales@nebula-appliances.com](mailto:sales@nebula-appliances.com)**

## PRECAUTIONS

- Always unplug the power supply from wall outlet when not in use.
- Do not store device in sun or location with high temperatures, as this may reduce the lifespan of the led diode.
- Do not use device if your skin is light sensitive, if you are currently using medication, or if you're undergoing treatment that may cause sensitivity of skin to light.
- Ask your doctor prior to using if you:
  - Are pregnant or suspect you may be pregnant.
  - Are taking drugs known to cause light sensitivity
  - Are suffering from a serious medical condition
- Stop using immediately and contact us if you suspect that you have had a negative reaction from using this device.

**contact us:**

***sales@nebula-appliances.com***



## OTHER MANUALS

### FR:

Pour consulter le manuel en français, veuillez visiter notre site web:

**[www.nebula-appliances.com/manuals](http://www.nebula-appliances.com/manuals)**

### IT:

Per visualizzare il Manuale in francese, visiti il nostro sito web:

**[www.nebula-appliances.com/manuals](http://www.nebula-appliances.com/manuals)**

### DE:

Um das französische Handbuch anzusehen, besuchen Sie bitte unsere Website:

**[www.nebula-appliances.com/manuals](http://www.nebula-appliances.com/manuals)**

### ES:

Para consultar el manual en francés, visite nuestra página web:

**[www.nebula-appliances.com/manuals](http://www.nebula-appliances.com/manuals)**

## THANK YOU FOR YOUR PURCHASE

Share your experience  
with us. We'd love to hear  
your feedback.

**[sales@nebula-appliances.com](mailto:sales@nebula-appliances.com)**





[www.nebula-appliances.com/manuals](http://www.nebula-appliances.com/manuals)