



Nebula Red Light

NB300, NB600 & NB1000



USER MANUAL

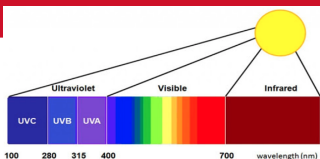
ENG Instructions

For FR, DE, IT & ES user manual
please visit our website:

www.nebula-appliances.com/manuals

ABOUT YOUR RED LED LIGHT THERAPY PANEL

Photo bio-modulation, also known as low-level light therapy (LLLT), is a medical technique in which exposures to low-level laser light or light-emitting diodes (LEDs) stimulate cellular function leading to beneficial effects. LED is a semiconductor device available at wavelengths ranging from ultraviolet (UV) to visible to near-infrared (NIR) bandwidth that converts electrical current into a non-coherent narrow bandwidth of the electromagnetic spectrum.



It isn't just light that we can see that comes from the sun. White light can be split up into a spectrum of many different wavelength and colors.

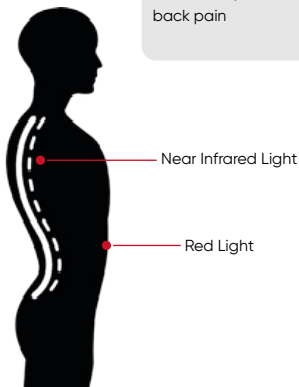
We have focused our product on the visible red light and invisible near infrared light, which have been identified to give benefits to human body.

Studies show that Red Light 620nm-670nm can penetrate deep into the skin of 4-5mm. Whilst Near Infrared Light 740-880nm can go much deeper to reach the subcutaneous layer and increase blood flow.

INTRODUCTION

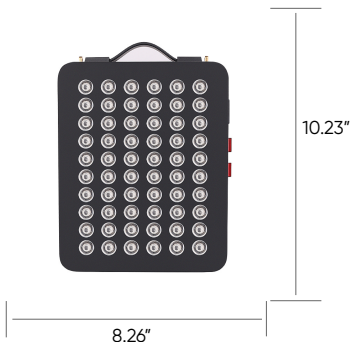
The 300w, 600w, and 1000w red light therapy panels emit both visible red light (660nm) and non-visible near infrared light (850nm) which provides various therapeutic health benefits which may include:

- Improved skin
- Anti-aging
- Anti-wrinkle
- Mental clarity
- Relaxation
- Increased sleep
- Increased collagen production
- Stimulated hair growth
- Increased blood flow
- Reduced inflammation
- Enhanced muscle recovery
- Reduced joint and back pain



PARAMETER - NB300

Power:	300w
Size:	260x210x65mm
Spectrum:	660nm & 850nm
Led:	60pcs double chip led
Net Weight:	2.65kg
Beam Angle :	30 degrees
Dual Switch :	RED & Infrared control
Voltage:	AC85-265V
Irradiance:	>200mw/cm ² @ 0inches >180mw/cm ² @ 3inches >120mw/cm ² @ 6inches >85mw/cm ² @ 12inches



FUNCTION - NB300

The 300w red light therapy panel consists of 60pcs dual chip LEDs, each single led diode includes: 1x660nm red and 1x850nm infrared.

The way that we have designed this panel is to mix the red and infrared more evenly then to achieve a more better therapy result.

MIX 660NM & 850NM



DUAL-SWITCHES

Dual switches control red and near infrared separately

RED: control 60pcs red 660nm

NIR: control 60pcs near infrared 850nm

Note: Near infrared 850nm is not visible to human eyes, but you can see it clear under camera.

PACKING - 300W

NB300

60x5W

Dual Chip

660nm&850nm



MAKES YOU HEALTHY!



Adjustable Pulley System



Goggles



Buckle



Power Cord



Door Hook

A: 1x 300w red light therapy panel

B: 1x standard Power Cable

C: 1x Goggles

D: Other Accessories Available

Input port
ac 100-240v

Fan

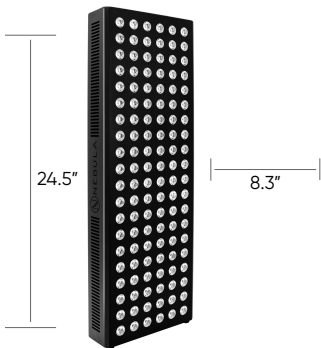
ON/OFF
Switch

Adjustable
Stand



PARAMETER - NB600

Power:	600w
Size:	621x211x65mm
Spectrum:	660nm & 850nm
Led:	120pcs double chip 5W
Net Weight:	4.00kg
Beam Angle :	30 degrees
Dual Switch :	RED & Infrared control
Voltage:	AC100-240V
Irradiance:	>200/cm ² @ 0inches >100/cm ² @ 3inches >65mw/cm ² @ 6inches >50mw/cm ² @ 12inches



FUNCTION - NB600

The 600w red light therapy panel consists of 120pcs dual chip LEDs, each single led diode includes: 1x660nm red and 1x850nm infrared.

The way that we have designed this panel is to mix the red and infrared more evenly then to achieve a more better therapy result.

MIX 660NM & 850NM



DUAL-SWITCHES

Dual switches control red and near infrared separately

RED: control 120pcs red 660nm

NIR: control 120pcs near infrared 850nm

Note: Near infrared 850nm is not visible to human eyes, but you can see it clear under camera.

PACKING - 600W

NB600

120x5W

Dual Chip

660m&850nm

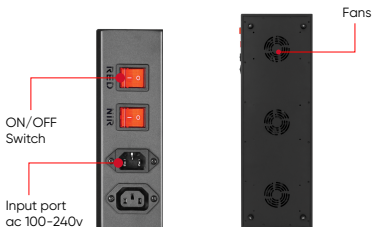


A: 1x 600w red light therapy panel

B: 1x standard Power Cable

C: 1x Goggles

D: Other Accessories Available



PACKING - 1000W

NB1000

204x5W

Dual Chip
660nm&850nm

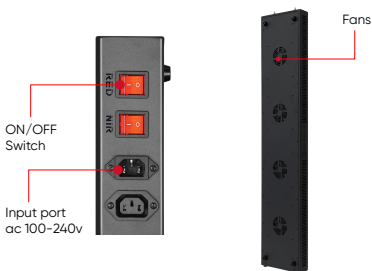


A: 1x 1000w red light therapy panel

B: 1x standard Power Cable

C: 1x Goggles

D: Other Accessories Available



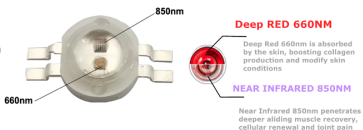
FUNCTION - NB1000

The 1000w red light therapy panel consists of 204pcs dual chip LEDs, each single led diode includes:

1x660nm red and 1x850nm infrared.

The way that we have designed this panel is to mix the red and infrared more evenly then to achieve a more better therapy result.

MIX 660NM & 850NM



DUAL-SWITCHES

Dual switches control red and near infrared separately

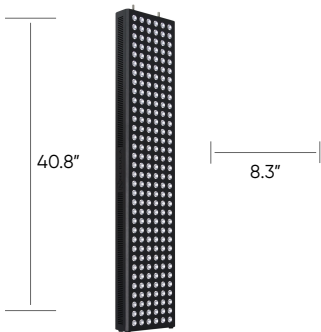
RED: control 204pcs red 660nm

NIR: control 204pcs near infrared 850nm

Note: Near infrared 850nm is not visible to human eyes, but you can see it clear under camera.

PARAMETER - NB1000

Power:	1000w
Size:	104x21x6.5cm
Spectrum:	660nm & 850nm
Led:	204pcs double chip 5W
Net Weight:	6.25kg
Beam Angle :	30 degrees
Dual Switch :	RED & Infrared control
Voltage:	AC100-240V
Irradiance:	>200mw/cm ² @ 0inches >118mw/cm ² @ 3nches >85mw/cm ² @ 6inches >64mw/cm ² @ 12inches



OPERATION INSTRUCTION

PLEASE NOTE RESULTS ARE NOT INSTANT
YOU WILL NEED TO USE CONSISTANTLY TO
SEE BENEFITS.

- Clear the area being treated by removing all traces of make-up or sweat. For best results wash the area being treated to ensure a clean surface.
 - For safety, please make sure the switch is in the OFF position before you plug in the power cable to the wall outlet.
 - Place the front of the device next to the bare skin you want to treat, no more than 6-10 inches away from the area being treated.
-
- Use button Red (660nm) for skin conditions. This light can be absorbed more effectively by the top layers of the skin. Use button NIR (850nm) for penetrating deeper into skin. You can use both at the same time for all benefits.

- When using the device on your face, do not look directly at the LEDs. There are goggles included in the packing. We recommend wearing them if the light is too bright.
- Do not operate device anywhere that it could come into contact with water. Stop using device immediately if you think it is defective. Please contact us and get more instruction: - **sales@nebula-appliances.com**

PRECAUTIONS

- Always unplug the power supply from wall outlet when not in use.
- Do not store device in sun or location with high temperatures, as this may reduce the lifespan of the led diode.
- Do not use device if your skin is light sensitive, if you are currently using medication, or if you're undergoing treatment that may cause sensitivity of skin to light.
- Ask your doctor prior to using if you:
 - Are pregnant or suspect you may be pregnant.
 - Are taking drugs known to cause light sensitivity
 - Are suffering from a serious medical condition
- Stop using immediately and contact us if you suspect that you have had a negative reaction from using this device.

contact us:

sales@nebula-appliances.com

OTHER MANUALS

FR:

Pour consulter le manuel en français, veuillez visiter notre site web:

www.nebula-appliances.com/manuals

IT:

Per visualizzare il Manuale in francese, visiti il nostro sito web:

www.nebula-appliances.com/manuals

DE:

Um das französische Handbuch anzusehen, besuchen Sie bitte unsere Website:

www.nebula-appliances.com/manuals

ES:

Para consultar el manual en francés, visite nuestra página web:

www.nebula-appliances.com/manuals

THANK YOU FOR YOUR PURCHASE

Share your experience with us. We'd love to hear your feedback.

sales@nebula-appliances.com





www.nebula-appliances.com/manuals